

The Dynamics of the 5 Platonic Solids

For more than 3000 years humans have been intrigued with the 5 Platonic bodies. Plato was the first to relate their shape and energetic power to both the four elements of Earth, Water, Air and Fire and to the Spirit.

Their crystal clarity astonishes us, and their regularity reminds us of ancient laws working in nature since the beginning of time. Crystals and stones will show us the Platonic Solids in most varying design.

We shall approach their power and dynamics by modelling them in Clay. The Platonic Solids will come into being through our hands, allowing us to experience their forming forces within ourselves.

Workshops 2018: November 22-24

Workshops 2019: March 14-16 / June 10-22 / August 8-10



The Human Countenance

Through Painting and Drawing, we shall approach expressions of the human face. What will a countenance tell us? What secret does it contain? Our slow humorous and methodical approach will help even beginners to open up this theme. Don't be afraid of long noses!



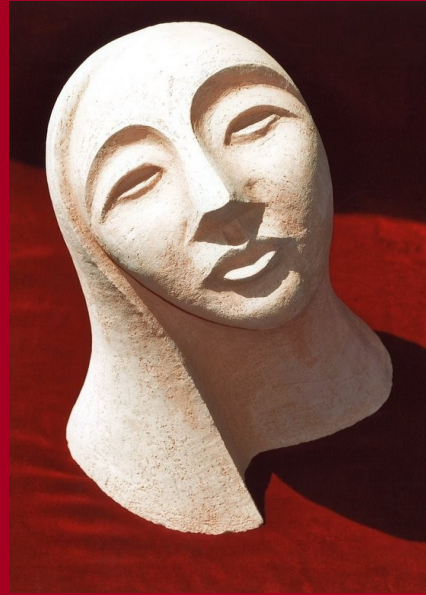
Workshops 2018:

October 18-20 / December 13-15

Workshops 2019:

February 21-23 / May 16-18

July 4-6



Coming to Know Ourselves

Through Modelling a Head of Clay

In the particular shaping of a head of clay we may learn to read the way we connect to the outside world. How can we alternate between the impressions of the world around us and our soul so that we can reach a very particular personal expression? - It is a way to teach us our own senses and our relationship to form.

Workshops 2018: October 25-27

Workshops 2019: February 14-16 / August 1-3

Centro de Terapia Antroposófica

in co-operation with
Fundación Canaria Antroposófica en Lanzarote

Calle Salinas 12

E - 35510 Puerto del Carmen

Lanzarote / Canary Islands

Phone: (0034) 928 512 842

Fax: (0034) 928 512 844

Email: info@centro-lanzarote.de

Further information can be found on our Website:

www.centro-lanzarote.de

Facebook Centro de Terapia Antroposófica english

Copyright© 2016: Centro de Terapia Antroposófica S.L.



Centro de Terapia Antroposófica

Workshops with Annegret von Pusch 2018 /2019



The Therapy- Vacation- and
Cultural-Center
on the sunny volcanic island of
LANZAROTE

What is Infinity?

*Modelling Forms in Movement -
The Lemniscate and the Möbius Strip*

*Dynamic Drawing and Clay Modelling
Motion becomes visible as we follow the forces that form
and shape. We let our experience of motion flow as it
grows into form. We feel the space around us coming
alive: Discover what is inside and what is outside and
the constant exchange between the two. The Lemniscate
and Moebius' Strip show us this principle of motion
changing into form. We find it again in living nature -
there are infinite variations.*

Workshops 2018: October 11-13 / December 6-8

Workshops 2019: January 31 - February 2 / May 23-25 /
July 18-20



©1 by Centro de Terapia Artística S.L.

Imaginations Becoming Visible

While painting with various materials we employ special methods to open ourselves to our inner world of imaginations. The images slumbering within us becoming visible and tell us our very personal history.

Thus freed they may help us to render conscious what will enrich our lives.

Workshops 2018: November 1-3 / December 20-22

Workshops 2019: January 17-19 / March 21-23 / June 13-15



Dynamic Drawing

In this workshop you can experience yourself how movement turns into forming forces, then condenses matter and coalesces into form

Workshops 2018: November 15-17

Workshops 2019: January 24-26 / March 28-30 / June 27-29

Archetypes in Fairy Tales and Myths.

Would you like to immerse yourself into the imagery of fairytales and myths? They will lead us into a world of archetypes in our soul.

In this seminar you may illustrate your favourite fairytale, thus reviving it. Or you may follow up the method of archetypal imagery in a playful way and create your own tale. Painting with all materials possible.

Workshops 2018: October 4-6 / November 29 - December 1

Workshops 2019: January 10-12 / February 7-9 /
May 30 - June 1 / July 25-27



Modelling by Nature's Shapes

3-day-course: There are astonishing shapes growing in nature such as seeds, seed heads, blossoms, leaves, and different kinds of wood. Looking at animals we find sea shells, mussels, and clams, snails and many more. We will deal with such shapes given to us by nature. We will try to know them more closely by modelling and drawing. Feel invited to bring along specimens of your own choice.

Workshops 2018: November 8-10

Workshops 2019: March 7-9 / June 6-8 / July 11-13